



TURNINGS

June 2004

WCWA, Pinelands Hobbies Club, Nursery Way, Pinelands
AWSA home page: www.awsa.org.za

Central Ohio Woodturners (Sister club to WCWA): <http://www.biosci.ohio-state.edu/~awolfe/COW/cow.html>

We're going to try completing the Newsletter by the 2nd Wednesday of each month. This means that those who are on our e-mail distribution list will get it that much earlier than in the past. Members who collect it from the formal meetings will be able to pick up their printed copy as usual; the remainder will then be posted.

Please do make use of the e-mail version if possible, as it saves your club printing costs, envelopes, stamps and time. It all adds up.

Contributions for the newsletter are always welcome. Don't think that just because you've missed the boat this month that you're off the hook. You'll just be in good time for the next one! Someone asked about photos - I'm more than happy to receive digital pics, or prints. I'll handle whatever you can send me. Thanks to Mike Richards for this one of Izak and Mick from the "Hands On" class

NEXT MEETINGS

The next date to diarise is **Wednesday 16th June**. Not the formal meeting this month, but the deadline to hand in your pieces for judging for the Winter Showcase. Come along, enjoy some good company and see what Tom Allan has for sale on his second hand "Everything Must Go Before We Do" table...



Winter Showcase

This will take place the following **Wednesday, 23rd June**. A brief meeting will start at 7pm sharp. Following that, pieces will be on display for all to enjoy, along with the marks allocated by our hard working panel of judges. Bert has promised us a full breakdown of how those marks were allocated.

WOODTRADERS
Unit 7B, Wetton park, Dolphin Way,
Wetton, Tel: 762 9530, Fax: 762 9538
Wimledon Way, Blackheath
Tel: 905 5073, Fax: 905 5082

Oak, Maple, Beech, Pine etc	Marine & Waterproof Plywood
Joinery Timbers (eg Meranti, Iroko)	Decking & Garage Door Slats
Suppliers to Shipwrights, Boat Builders, Carpenters & DIY	Machining Services & Mouldings

FROM THE CHAIRMAN

Hello All,

It feels as if it is just the other day I wrote the previous article. The formal meeting, the slide show Dennis prepared and Gert's raffle started the month on a very high note. The next Saturday we had a very successful open day at Gert's house, followed by a good planning evening, a committee meeting and Ken is pushing to get "Turnings" out earlier. Over and above all that, there were many joyful hours in front of the lathe.

The planning evening went off very well; a draft program for the year will be made available. Quite a number of other interesting ideas were brought forward and attention will be given to them. Thanks Graeme for leading the discussion.

One of the many ideas that came up very strongly is the training of members. A serious attempt will be made to give more structure to the training we offer to our members. Any ideas are welcome.

The Winter Show Case - I am looking forward to seeing all the beautiful pieces. Good luck with your preparation.

Thanks for all the support and see you all at the next meeting.

Louis

A HÜSTER MACHINE TOOLS (Pty) Ltd
51 Voortrekker Road
PAROW
WOODWORKING MACHINERY
& SHARPENING SERVICES

Tel: 591-8121
Fax: 591-0896
e-mail: hmtcbn@iafrica.com

EDITORIAL

Our up-country and overseas readers may be interested to read that the Western Cape is currently experiencing one of the driest winter spells I can remember, with virtually no rain throughout May. Even temperatures were unseasonably high with warm berg winds pushing up temps recently to almost 30C. We look forward to some decent rains, some colder weather and winter fires in our living rooms to clear out some of that designer firewood we've so painstakingly spent the summer months turning. Its also the time when we hope to be able to harvest some of the windfalls from the winter gales. Do, when possible, let buddies know about any wood going in your area or even better, bring it along to the club. Don't forget the club has Hydrowax for sale at R40 per 5l container. Have some handy and you'll increase the chances of any green wood you may pick up ageing gracefully without cracking up. (Think it might work on your editor?)

On another track, read the list of planned future events which were identified last month. Think about them, and think about areas you'd like to know more about. Share your thoughts via the Newsletter and if there's enough interest we'll see whether we can organise an expert in that field to chat to us. What about someone from Bohler or Somta to talk about steels and heat treatment? From Henkel on adhesives? From Woodoc? Someone from UCT to talk about variable speed motor control units or mechanical properties of woods? There's a whole world of experts out there, guys, but we need your input. Help us by filling in those questionnaires at the back of this newsletter.

Eagle-eyed members may have noticed that I omitted our website address from the header of last months newsletter. Deliberately, as we've lost the password for it so it has not been updated for some time! Plans are underway to remedy this a.s.a.p.

Ken

COMMITTEE CONTACT DETAILS

Email addresses, home and cell numbers for the new committee members are:

Louis Van Niekerk (Chairman) louisvn@iafrica.com; 913 1470, 082 885 0347
Graeme Hill (ViceChairman) graemehill@mweb.co.za; 714 1369, 083 252 4642
Gert Ferreira (Secretary) gskc@mweb.co.za; 559 1409, 083 2695 5835
Bert Parker (Treasurer) nimbus@yebo.co.za; 914 0927, 072 271 1637
Ken Turner (Editor) ktturner@iafrica.com; 689 9251, 083 651 4993 (Fax 689 9715)
Nico Bantjes (Marketing & PR) nico@paragmed.co.za; 913 0296, 084 610 0026

Usual Monthly meeting schedule:

The workshop will be open from 19:00 – 21:00 for the "working" Wednesday meetings. Those using the facilities are expected to tidy the workshop at the end of the evening.

- 1st and 4th Wednesdays are usually informal evenings when members are welcome to use the Association's equipment, receive guidance from more experienced members and generally discuss matters turning. (Also the committee meeting on the first Wednesday)
- 2nd Wednesday is specifically set aside to assist beginners. Subject of demo or videos to be advised in programme. Let Workshop Duty Manager know if you wish to book a lathe.
- 3rd Wednesday is usually the regular formal meeting, comprising discussion of Association matters, an Instant Gallery critique, as well as demonstrations, and in June and November, the biannual Showcases.

NB Remember to bring your own tools and other accessories for the "working" Wednesdays.

REPORT BACK ON RECENT EVENTS

The May meeting produced two innovations - Firstly a very interesting showing of digital pics taken at the last Durban Seminar to bring us all up to speed. Our thanks to Dennis and Louis for sharing their pics and providing the necessary equipment for a very slick show. Secondly, the evening was concluded with a fun raffle which allowed most of us to go home with lemon tree blanks or SuperGlue. Gert reports that R180 was raised which will go towards club advertising and promotion. Thanks Gert for making it happen.

Feedback from the raffle was very positive so its likely to become a regular event at our meetings, but please folks, we need donations to be raffled. Not necessarily turning related, (though that is naturally first prize) but anything you feel you'd like to donate - beers? (he suggested hopefully) a ream of computer paper? wine? abrasives? A pair of safety gloves? Novathane? What would you like to walk out with for just R2? Try asking around in your area - its surprising what even small companies and retail outlets will donate in exchange for a bit of publicity which we're only too happy to give them on the night.

<p>DISCOUNT TOOL CENTRE CAPE TOWN 021-949-2002/3/4 176 DURBAN ROAD BELLVILLE</p> <p>FOR ALL YOUR TOOLING REQUIREMENTS</p> <p>FROM SCREW DRIVERS THROUGH TO WOOD TURNING LATHES AND ACCESSORIES</p> <p><small>FOR POWERTOOL REPAIRS AND SPECIALIST ADVICE ON ALL MAKES OF POWERTOOLS</small></p> <p><small>VISIT DISCOUNT TOOL CENTRE FOR THE RIGHT TOOL AT THE RIGHT PRICE</small></p>

Open day at Gert and Sharon's home -

This was a very successful hands-on workshop day and is something which we'd certainly like to hold more often.

We arrived to find a workshop which looked suspiciously clean. Even the neatly packed racks of blanks were dust-free and tidy, but fortunately within a couple of hours it was looking far more respectable as a big chunk of mulberry was converted to a suitable sized blank for Bert; Lenette got stuck into turning a baseball bat, our chairman got his fingers onto (into?) a lemon bowl and I tried out all Gert's surface-decorating tools. (Thank you Eric for the following pic of Lenette)



It was time so well spent and helps to form the understanding and camaraderie that distinguish excellent clubs from the mediocre. I was so interested in Gert's comment afterwards "I never expected to learn so much". Well neither did we Gert, so thank you and Sharon for your efforts and hospitality.

FORTHCOMING EVENTS

At the open meeting held 26/05/04 we came up with these as a provisional skeleton to which other events will be added -

- June** - Winter Showcase (Committee & Judges)
- July** - Collaboration Evening (Louis)
- August** Demo - Involuting Turning (Thys Carstens)
- September** - Widget Evening
- October** Demo- Wood Carving (Vicos & Gert)
- November** - Year End Showcase / challenge of projects / African Theme / 10th Anniversary
- December** TBC
- January** 2005 Thread Chasing (Peter Nicolle, Izak Cronje)
- February** Segmented Work (Bert)
- March** Mystery Night
- April** AGM

(This does not include any of the items for the fourth Wednesdays of the month.)

One item begs for more explanation - it's the "Widget Evening" planned for September. Other names for it would be a thingummy evening, a gadget bring-and-brag, a round tuit demonstration... You get the idea I'm sure.

Its an opportunity for each one of us to bring along a couple of our favourite gizmos to tell us how they work, why you find them useful, why you can't work without them and share the vast store of experience built up by club members. The items might be homemade, commercial or shown in photos or

drawings. The only proviso is that it would be useful if you could manhandle it into the club by yourself (Sorry Izak, we know you wanted to bring your VB36) and keep your descriptions brief - 5 minutes max per person, with more time at the end of the evening if available. I hope the club looks like a waiting room at a patents office!

A very good photographer was asked at a training seminar why he was always so ready to share his good ideas - "Easy" he said - "For every one I share I get at least two in return..."

We've tried to promote events that will lead to participation by more members. Add to these a clearly identified need for wood identification - both growing and in log form. We're planning a demo on how to handle chainsaws effectively and safely to prepare blanks for bowls. Kirstenbosch is an ideal classroom for the tree ID part, though both Gigi and Dennis felt we should probably leave the chainsaws behind on that day.

We also want to involve more of our suppliers and experts in related but relevant fields, making fuller use of fourth Wednesdays in the month.

The idea of having an Open Day got off to a good start and the current thinking is to stage a combined Hobbies Club open day (or weekend) probably in February next year to raise funds for the club.

DEMONSTRATIONS -

Fathers Day at the Waterfront Craft Market - Set up late Thurs 17th June; Demos on Friday 18th Sat 19th, Sun 20th from 09h30 till 18h00. Please ring Eric (531-1559) if you're able to help with setting up and transport, demonstrating / PR, or packing up on the Sunday. It's a pleasant indoor venue and with the promotions planned we hope to have lots of feet passing through the Craft Market over those three days. **Hobby-X** will be at Cape Town Conference Centre this year for the first time. From Thurs 24th June - Sunday 27th. Again, Eric has agreed to co-ordinate this one.

Cape Town Flower Show 7 - 10 October, as for last year, at CTCC, but even bigger and certainly better.

Heartfelt thanks - from Vista Nova School and the Red Cross Children's Hospital Trust for donations



SHAPING THE FUTURE WITH WOOD
TIMBER SUPPLIERS

PIERRE FOURIE	CONTACT DETAILS:
CELL: 082 700 3490	TEL: (021) 534 0636
Email: Address.futurewoods@atfrica.com	FAX: (021) 534 0784

	ADDRESS:
	NO.4 FISHER AVENUE
	EPPING INDUSTRIAL 1
	SECOND BUILDING ON RIGHT

STOCKIST OF:

AFRICAN BAMBANGANI, KANT, OBECHE, WALNUT, MAPLE, CHERRY, OAK, ASH, BEECH, AFRICAN ROSEWOOD, IRKO, NIMBIA, PEPLAR, SA PINE ETC.

raised from the sale of articles turned and contributed by members at past demos. The thank you letters be displayed for all to read at the Winter Showcase. Well done to all members who helped to make this possible.

SUBSCRIPTIONS

Annual Subs for 2004/2005 were revised at the AGM and have been increased from R130 to R200 for Woodturners (including the Hobbies club levy.) These are now due, and we also need to update our records. Please fill in the attached form and return together with payment to our treasurer Bert Parker.

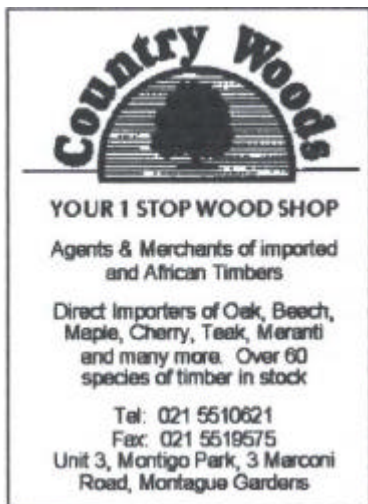
NB: A request from Bert:

If you renew your membership via direct deposit, please let him have your payment and membership details so he can update his records and credit you with your payment.

Guest Fee:

A guest fee of R25 per visit will apply to members who have failed to renew their membership, and guests attending more than two club meetings. (Yes, this has increased! At only R10 an evening it would not have paid anyone to join or be a member...)

Note: AWSA membership of R55 should be paid together with WCWA subs. The National Body prefers to have clubs pay for their members as a group payment, rather than individuals paying directly to the AWSA.



THE MARKET PLACE

We run commercial adverts in our newsletter. If you wish to advertise, or know of a company or person who might like to advertise, please contact Bert Parker or Ken Turner. Rates for an advert placed in the monthly newsletter, are R350 per annum. The adverts are rotated monthly to make it fair to all.

“The Market Place” is a free service for members, however the editor would appreciate feedback as items are sold.

Members' Items for Sale

Tom Allan still has one lathe for sale -

Nova Comet woodturning lathe
Diameter over bed 255 mm
Between centres 360 mm
2 MT Headstock & Tailstock
Spindle thread M30 x 3,5 R.H
6 speeds 450, 570, 1200, 2000, 3000 rpm.
Spindle index 24 divisions
2 MT spur centre
2 MT live centre
100 mm toolrest
80 mm faceplate
P.O.A.

Contact Tom Allan, 021 712 7160

SECOND-HAND TABLE

Please remember to bring along old tools to the “formal” meeting”. This offers the newer members an opportunity of acquiring affordable tools, while you have some extra cash for that next bowl gouge you are hankering after. This Wednesday, 16th June, Tom plans to bring along some of his remaining stuff . You never know... (If anything hasn't been sold, it might well reappear the following week at knockdown prices)

TURNING JACKETS

Nico Bantjes is producing workshop jackets, blue with the club logo.
R35 for apron and R55 for the full jacket.
Tel: (021) 913 0296

SUPERGLUE

Glue available from Bert Parker. The brand he has (Cartell) is by far the best that I've used.

DUST MASKS

These are also available from Bert. A real boon when working with woods which produce irritating dusts.



TAILPIECE – Rude Osolnik was once asked what he felt the single most valuable thing was in learning to turn – “Standing in front of a lathe” he answered.

Members Questionnaire
June 2004

What would you like to see
happening in our club?

How can you contribute?
Contacts? Expertise? Skills?
Interests? Related Business
Contacts?

Demos

Practical

Talks

Videos

Library

Other

Name –

Contact telephone number



WESTERN CAPE WOODTURNERS ASSOCIATION

MEMBERSHIP FORM: 2004 / 2005

Dear fellow woodturner,

Thank you for renewing your annual membership of our Association.

The new membership fees are structured as follows:

Ordinary member:

WCWA	R160.00
Hobbies Club	40.00
Total	R200.00

Family member:

(Same surname – living under same roof)

WCWA	R120.00
Hobbies Club	R35.00
Total	R155.00

Country member:

(No Hobbies Club fee)

Total	R155.00
--------------	----------------

Association of Woodturners of SA

AWSA	R55.00
------	---------------

Remittance:

Membership: Western Cape Woodturners Association (WCWA):.....

Membership: Association of Woodturners of South Africa (AWSA)

Voluntary Donation (towards equipment maintenance and purchase): _____

Total Remitted: **R**.....

Method of payment [Cash / Cheque (Give number)]

Cheques should be made payable to the WCWA. Kindly bring this along to the 'formal' meeting on the 3rd Wednesday of the month, or mail to

Bert Parker, 7 Mildred Road, Kenridge, Durbanville, 7550

Personal Details:

Name: _____ Spouse: _____

Address: _____

_____ Code _____

Telephone: (H) _____ (W) _____ (C) _____

Fax: (F) _____ E-mail _____

Preferred method of receiving newsletter (please tick your choice): Post Email

If E-mail, would you prefer to receive the newsletter as an MS Word document (.doc) or in Adobe Acrobat (.pdf) format? _____

Please fill in the Indemnity Form overleaf and return to Bert Parker.



WESTERN CAPE WOODTURNERS ASSOCIATION

INDEMNITY FORM

I,hereby agree to adhere to all the safety requirements specified by the Western Cape Woodturners Association as well as all other safety regulation as specified by government or other bodies that may apply to any meeting, demonstration, course or other form of gathering of the WCWA.

I further agree to use all and any safety equipment as required by the WCWA at all times. I understand that failure to do so will be at my own risk.

I agree not to hold the WCWA or any Committee Member(s), ordinary member(s) or guests or visitors liable for any harm or injury that may occur to myself whilst attending any club activities.

I undertake to refuse to perform any activity that may cause harm to myself or other parties unless the proper safety equipment is provided as well as the necessary safety precautions are taken.

I agree to follow any instructions given me by the WCWA regarding my own and other parties safety.

SIGNATURE: **DATE:**

WITNESS: **DATE:**

WITNESS: **DATE:**